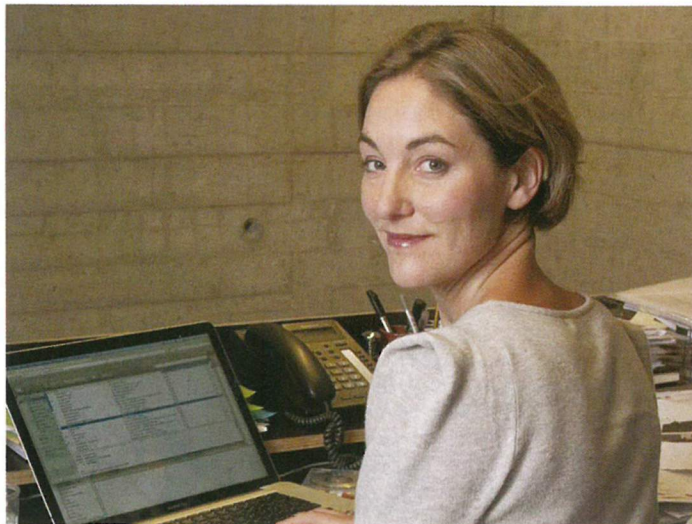


NEWS IN PICTURES



Cousins & Cousins has revealed its designs for the pavilion it will create on St John's Square for Clerkenwell Design Festival 2015 (19-21 May). The pavilion, named 'Glaze', is constructed from coloured panels of glass, alternating between transparent and opaque.



dRMM co-founder **Sadie Morgan** has been appointed to lead a panel overseeing all design on the HS2 rail link. The independent group will look into every design aspect of the £42.6 billion infrastructure project between London and Birmingham.



Chilean architect **Smiljan Radic**'s 2014 Serpentine Pavilion has been re-erected in its new long-term home in Somerset. The pavilion, which sat in London's Kensington Gardens until it was dismantled last October, has been relocated to the gardens of the Hauser & Wirth gallery and arts centre at Durslade Farm, Bruton.



Theis + Khan has won planning permission for a church-cum-housing development in Watford. The building, which will be clad in ceramic tiles, references 'religious scrolls and Watford's history as a paper-making centre'.



Stanton Williams has won planning for a £37 million overhaul of the world-famous Royal Opera House in central London. The scheme forms part of the Opera House's 'Open Up' project, which includes improving the Grade I-listed building's entrances and public spaces.